

**PRESEASON: Green Bay Packers (1-0) 21, Brooklyn Dodgers 16
Saturday August 29th 1942 (at Brooklyn)**

Packers Are Masters Over Brooklyn, 21-16

**Cecil Isbell Stars, Finds Receiver for 19 of
30 Passes; Scores One Touchdown, Others
Are Chalked Up by Don Hutson, Andy Uram**

GAME RECAP (GREEN BAY PRESS-GAZETTE)

(BROOKLYN) - The Green Bay Packers still are the gridiron masters of the Brooklyn Dodgers. In an exhibition game between the two National league teams at Ebbets Field Sunday, the Packers hung it on the Dodgers, 21 to 16, with Cecil Isbell the shining star. With Isbell connecting on 19 of his 30 aerials, the Wisconsin eleven struck from behind in an unusually well played game for so early in the season before a paid crowd of 9,874 and 1,209 servicemen. Isbell's passes gained 272 yards. Tony Canadeo completed one of his four to run Green Bay's total gain through the air to 276 yards as compared with 60 on the ground. By comparison, the Dodgers rushed the ball for 134 yards and made nine out of 23 aerials for 133 yards. Green Bay had 20 first downs to Brooklyn's 11. Isbell's passes, one to Andy Uram and the other to Don Hutson, accounted for two of the Packers' touchdowns and he, himself, added the other on a sweep around end after a fumbled punt by Hal McCullough, Brooklyn freshman back, had set the stage. The Dodgers counted in the first period on Merlyn Condit's placekick, yielded the lead to the Packers early in the second when Uram caught Isbell's pass on the five-yard line and scamped over and then took command again midway of the third when Pug Manders dove over. The Packers struck back after McCullough's fumble and added the winning touchdown on Hutson's catch of Isbell's pass in the end zone after a sustained attack of 13 yards. The Dodgers drew first blood as Curly Lambeau started his second team, counting on Condit's 29 yard field goal near the end of the first period. After Condit had missed his first attempt from the 40-yard stripe, the Packers kicked out to the Dodgers' 35-yard line, from where the home eleven started to drive.

MCADAMS STARTS ATTACK

McAdams started the attack with a nine-yard run and then tossed a 22-yard aerial to Perry Schwartz. Condit moved it up to the 29-yard line where three plays failed to gain. The former Carnegie Tech back then dropped back to the 37 and booted the pigskin squarely between the goal posts. That was the signal for Lambeau to send in his first team with the backfield composed of Isbell, Larry Craig, Uram and Lou Brock and Hutson on one of the flanks. Craig took the kickoff on the 15-yard line and from there Isbell started pitching to Hutson, Uram and Craig. A 15-yard penalty for clipping gave the march a setback, but the ex-Purdue pitching ace threw to Brock for a gain of 14 yards, Uram for 18 more, and then Craig for 16. The attack was shifted to running with Isbell moving the ball to the eight-yard line as the period ended. After an incomplete pass and a futile plunge, Isbell caught Uram on the five-yard line and Andy stumbled over with Hutson adding the seventh point. The Dodgers took the kickoff on the 15-yard line and never stopped until they had made the score 10-7. Pug Manders' runback of the kickoff was good for 20 yards, and then after he had picked up only three on two line plunges, McCullough, a freshman from Cornell, heaved a 39-yarder to Herman Hodges. That placed the ball on the Packers' 21 from where Manders broke loose for a touchdown. Bruiser Kinard added the extra point. Intercepted passes stopped two Green Bay advances, one halted the Dodgers and a fumbled lateral cost them still another opportunity during the remainder of the

The Starting Lineups:	
GREEN BAY	BROOKLYN
Mason, le	le, Schwartz
Pannell, lt	lt, F. Kinard
Kunsisto, lg	lg, Joehner
Flowers, c	c, T. Robertson
Goldenberg, rg	rg, G. Kinard
Berezney, rt	rt, Merrill
Stonebraker, re	re, Rucinski
Starrett, qb	qb, Shetley
Canadeo, lhb	lhb, Condit
Laws, rhb	rhb, McAdams
Fritsch, fb	fb, Manders
Replacements	
Green Bay: Ends—Hutson, Ohlgren. Tackles—Ray, Lee. Guards—Lettow, Buchlanerl, Tinsley. Center—Albrecht. Backs—Craig, Isbell, Uram, L. Brock, Kahler, Sample, Miller.	
Brooklyn: Ends—Hodges, Tofil, Ellason. Tackle—Jurich. Guards—Raemer, Weiner. Center—Deremer. Backs—Jones, McCullough, Fedora, Butcher.	
Score By Periods	
Green Bay	0 7 7 7—21
Brooklyn	3 7 6 0—16
Scoring	
Green Bay: Touchdowns—Uram, Isbell, Hutson. Points after touchdown—Hutson, 3.	
Brooklyn: Touchdowns—Manders 2. Field goal—Condit. Point after touchdown—F. Kinard.	

second period. The Packers first drove to the 25, largely on the arm of Isbell, only to have Art Deremer, making his first start for the Dodgers, intercept the last of his aerials on the 20-yard stripe.

DODGERS DRIVE DEEP

The Dodgers then drove deep into Green Bay territory with Hal McCullough's pass to Rucinski and Manders' running accounting for most of the ground. But Isbell intercepted McCullough's aerial on the seven and the Packers once again stated rolling. Isbell's pass to Bob Kahler picked up 39 yards and one to Hutson 24 more. This time Manders intercepted Isbell's heave intended for Lou Brock, and it was the Dodgers' turn to get up steam. Condit's 48-yard run, with Hutson and Chuck Sample finally bringing him down on the 26, moved the Dodgers within striking distance. A lateral went wrong,

however, and Green Bay recovered just as the gun ended the half. The Dodgers hit pay dirt again early in the third period after Tony Canadeo's punt to Brooklyn's 38 had been returned 19 yards by Condit. Plunges by McAdams and Condit and two Condit to Perry Schwartz passes carried the ball to the four yard line. Manders did the remainder in two tries but Condit missed the try for extra point.

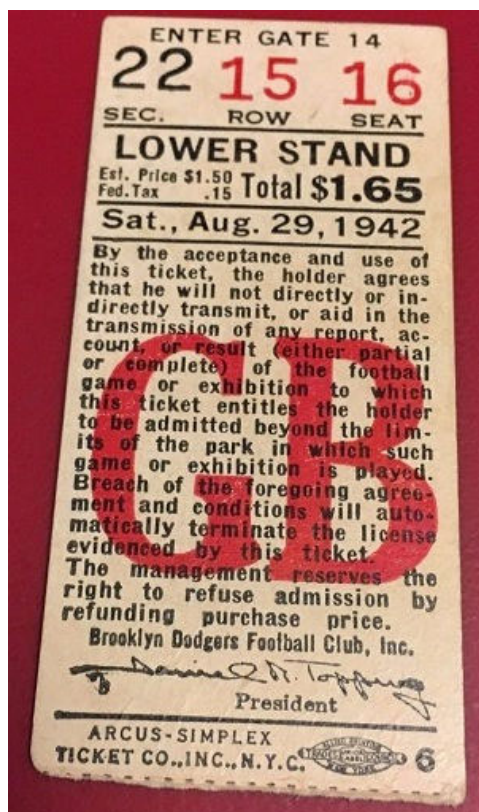
A COSTLY FUMBLE

Then came McCullough's costly fumble. Canadeo then booted the ball 44 yards to Brooklyn's 25 where McCullough let it roll through his legs to the five. His return punt went out only to the 44 and from there Canadeo dashed 26 yards. An Isbell to Hutson pass picked up 17 more and then the Green Bay backfield star swept around end for six points with Hutson adding his second extra point of the game. The winning touchdown drive got underway from Green Bay's seven-yard stripe after an exchange of kicks early in the last period. Lou Brock pushed the ball to the 21, Isbell hit Hutson for eight yards and then Uram for 19 more. A penalty cost the Dodgers five yards and Isbell and Hutson started clicking again. The first pass was good for 10 yards. Then came a five-yard run by Isbell, followed by another pass of nine to Don. Another of 20 yards to the same end put the pigskin on the three-yard line. Brock was stopped dead in one play but Isbell faded back and shot a bullet-like pass to Hutson in the end zone for the deciding score. McAdams apparently had Hutson covered but the pass was so hard that the Dodger back was unable to block it. The remainder of the game was played in midfield.

GREEN BAY	-	0	7	7	7	-	21
BROOKLYN	-	3	7	6	0	-	16

SCORING

- 1ST - BRO - Merlyn Condit, 37-yard field goal BROOKLYN 3-0
- 2ND - GB - Uram, 8-yard pass from Isbell (Hutson kick) GREEN BAY 7-3
- 2ND - BRO - Pug Manders, 21-yard run (Bruiser Kinard kick) BROOKLYN 10-7
- 3RD - BRO - Manders, 4-yard run (Merlyn Condit kick failed) BROOKLYN 16-7
- 3RD - GB - Isbell, 1-yard run (Hutson kick) BROOKLYN 16-14
- 4TH - GB - Hutson, 2-yard pass from Isbell (Hutson kick) GREEN BAY 21-16



Note to Major Wade: Better Not Forget About Green Bay's Stars

LAMBEAU CHEERS

AUG 31 (Green Bay) - In a telegram from New York City today, Coach Curly Lambeau commented enthusiastically on the play of the Packers in their game with Brooklyn Sunday afternoon. "Hutson and Isbell were outstanding," he asserted. "Bob Flowers (rookie from Texas Tech), playing 59 minutes at center, was one of the heroes of the game. Paul Berezney (first-year tackle from Fordham) also deserves mention." The Packers came out of the scrap without injury. Many mistakes were made, Lambeau admitted, but the game showed that "the boys have spirit." Bob Ingalls, University of Michigan center who was drafted by the Packers, will join the Packers Tuesday in Baltimore. "He looked very good in the All-Star game at Chicago last Friday," the Packer coach asserted.

LOOKING UP IN THE REALM OF SPORTS

AUG 31 (Green Bay) - The corps of salesmen being organized for the one-day Packer season ticket drive Thursday, Sept. 10, will have at least a dozen good arguments why, for a price of \$3.30 to \$8.25, you can't afford to pass up joining the ranks of season ticket holders.

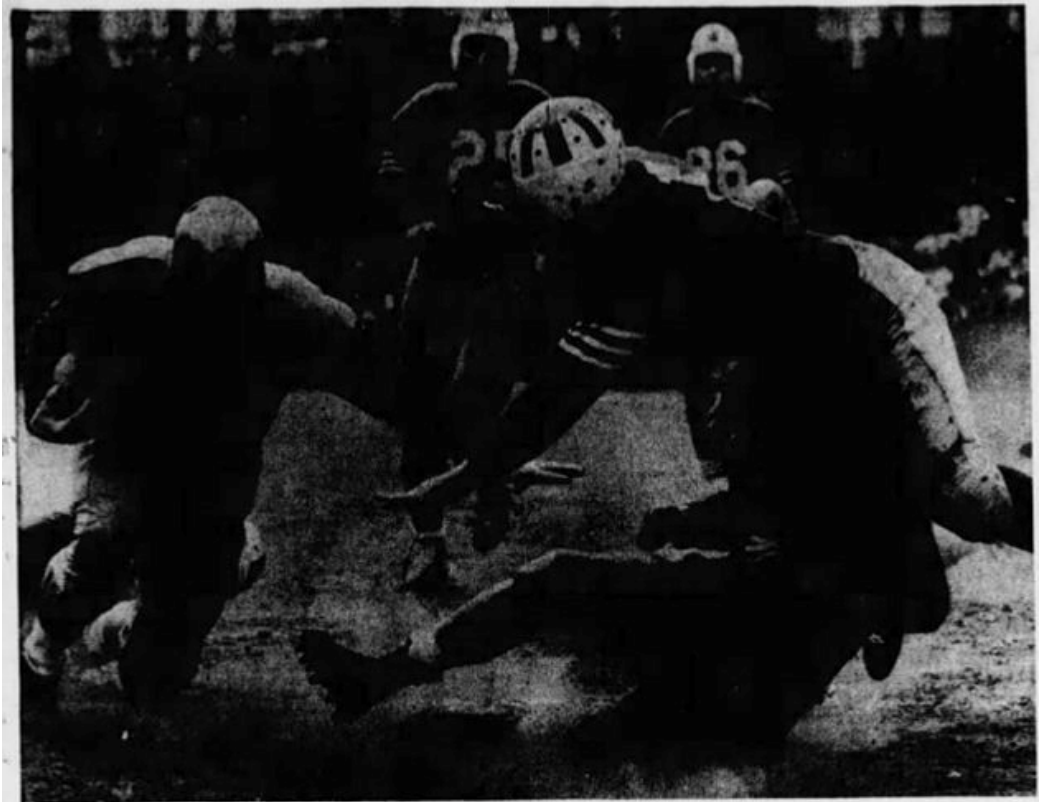
First, and of real concern to every Packer fan in Green Bay and northeastern Wisconsin, is the fact that hometown support indirectly, but surely, determines the schedule of games to be played here. Big crowds at all three games in Green Bay this year will give the Packer officials a powerful argument when next year's schedule is drafted at the National league meeting. The National league clubs want the Packers in the circuit, but they expect them to play their games where they will do most good. It costs the eastern clubs a great deal of money to travel to Green Bay, but you'll find them anxious to come here if they stand a good chance of making a nice profit. And you really can't blame them for taking that kind of an attitude. Buying a season ticket means money in your own pocket. Under the setup this year, you can save from 55 cents to a neat \$2.20, and that really adds up to something if there are several fans in one family. Three good games are scheduled in Green Bay this season. The Packers



Cecil Isbell (17) reels off five yards for the Green Bay Packers before Bruiser Kinard (25) of the Brooklyn Dodgers brings him down in Sunday's exhibition professional football game in New York. The Packers won, 21-16. AP Wirephoto

open the National league campaign with the most popular game of all, against the Chicago Bears, on Sept. 27. Dutch Clark's Cleveland Rams come here Oct. 18, while the Chicago Cardinals, who have been giving the Packers some of their greatest battles in recent seasons, will play here Nov. 1. If you buy a season ticket you are assured of a good seat, for that Sept. 27 game with the Bears. Many fans, recalling the sellout crowds of other years, consider the assurance of a seat for this game as worth the whole price of a season ticket. There are some fans who haven't been buying season tickets only because they expect visitors from out of town for one or more of the games. Whenever this happens, the Packer office is glad to make an exchange so the season ticket holder can obtain additional seats and sit with his guests. When you hold a season ticket, you sit in the same seat in the same section for all games and have a chance to get acquainted with a good many other Green Bay Packer fans. With a season ticket you can pick out the spot you like best, and know that it will be there for each home game. If you are a fan who expects to enlist or be drafted into the armed forces, you still don't take any chances on buying

a season ticket. All season ticket holders going into the armed services will have the unused portion of their tickets refunded. A certain number of fans, while vitally interested in the Packers, don't attend any but the Chicago Bear game. If this continues and attendance at other home games in Green Bay is not improved, it may not be long before they won't even be a Chicago Bear game here. If you are a public-spirited individual, as you certainly must be, you will see that it is a benefit to our community to build up the attendance of all home games and thus assist in the attempt to bring more games for Green Bay. The more games played here, and the better the attendance for each game, means better business for a great many people in this community. Even if you don't profit directly,



SAMPLE OF PACKERS' WORK—Chuck Sample (left) of the Green Bay Packers eludes tackle by Perry Schwartz of the Dodgers (hidden by dust in rear) as he goes around right end for seven yards at Ebbets Field yesterday.

better business means better living for everybody. To get the most of a good football game, you have to be there to see it in person. The radio really should be used only by fans living a great distance away, or by those who just can't get out to the stadium because of work or illness. If everyone went to Packer games by means of the radio, there soon would be no games to broadcast. This year a large number of people are making more money than ever before. Here they have a chance to make up for the fans who usually come great distances, and who this year must conserve their tires. Now, more than ever before, it is up to Green Bay, De Pere, and the surrounding territory to fill the seats at City stadium for all home games.

PRO LOOP FOLDS FOR DURATION

SEPT 1 (New York) - William B. Cox, president of the New York Football Americans of the American Professional league, said today the league's club owners are so tied up with war work that the circuit would not operate this year and possibly not for the duration. Owners of the Detroit, Columbus, Buffalo and Milwaukee teams are either in the army, navy, or engaged in vital war work, Cox explained. "As a result, we do not have time to go into this football business this fall. We held a meeting last December, at which time we decided to leave open until a July meeting the question of 1942 operation. However, in the last few weeks we decided, through an exchange of mail, that we could not go through with this year's schedule because of our war work. However, we will all be ready to go again once this important job is over. I want to stress that there is no financial problem involved. Each team definitely had enough finances to continue."

NOTE TO MAJOR WADE: BETTER NOT FORGET ABOUT GREEN BAY'S STARS

SEPT 1 (Green Bay) - Major Wallace Wade, coach of the Western Army All-Stars, made a statement after Sunday's defeat at the hands of the Washington Redskins which might make Green Bay fans ask: "Who is better, Baugh or Isbell?" Strictly on the basis of last Sunday's performance, we'd say Isbell, but Major Wade seems to think that there is only one Baugh - Sammy of the Washington Redskins who took Wade's All-Stars apart, 26 to 7, in Los Angeles. Wade's statement was: "Thank goodness, we won't meet any more Sammy Baughs on this tour."...**DATE WITH PACKERS:** The major, who recently complained that too many professional rules are being used in the army-pro exhibitions, seemed to have forgotten momentarily that his team has a date with the Green Bay Packers at Milwaukee Sunday, Sept. 13, and that his boys will bump square into the league's most effective passer in 1941 - Cecil Isbell. On top of that, the good major must look at the league's most valuable and greatest end - Don Hutson. In other words, Major Wade and his footballers have a tough job out for themselves when the Bays roll into Marquette stadium. The All-Stars will sharpen up for the Packers tilt with an exhibition with the Chicago Cardinals in Denver next Sunday...**CREAM OF THE CROP:** Regardless of all the Baugh-Isbell talk and the result of the Washington-Army affair, the Milwaukee duel shapes up as the best exhibition ever staged in these parts. Wade, and don't forget it, has the cream of the nation's college and professional crop, and those kids are due to reach their peak come the Sunday of Sept. 13. The Army outfit is headed by a NFL veteran, Ralph Kercheval, 30-year old Brooklyn

Dodger, who is the only captain (army ranking) on the team. Next in line on the Army rosters are 21 lieutenants, seven sergeants, nine corporals and 21 privates...ROHRIG ON TEAM: Of direct Green Bay interest is Herman Rohrig, a standout as a rookie with the Packers a year ago. Private Rohrig is one of eight halfbacks with the team. Heading the list of "name" players is Lieutenant John Kimbrough, the All-American fullback from Texas A. and M. Long John was about all the Army had the way of an offensive against the Washington Redskins. On the second play of the game, Kimbrough dashed to the right, knocked down two prospective tacklers, cut back and galloped 58 yards to a touchdown.

INGALLS ARRIVES IN PACKER CAMP

SEPT 1 (Baltimore) - Coach Curly Lambeau faced a problem today in regard to his two rookie centers - Bob Flower of Texas Tech and Bob Ingalls of Michigan - as he opened practice for the Packers' exhibition game with Washington's Redskins here Labor day. Lambeau praised the 59-minute play of Flowers in the 21 to 16 exhibition success at Brooklyn Sunday, and also had kind words for Ingalls for his work for the College All-Stars against the Chicago Bears in the ninth annual All-Star game last Friday. Ingalls arrived in the Baltimore training camp today. Charley Brock, veteran center, was held out of the Brooklyn game to rest a shoulder injury and, unless he is needed badly, will rest during the Washington game. Brock injured his shoulder in the first scrimmage session in Green Bay a week ago last Saturday. The Packers will leave immediately after the Labor day fracas for Green Bay where they will start intensive practice for the exhibition classic with Major Wallace Wade's Western Army All-Stars at Marquette stadium in Milwaukee Sunday, Sept. 13...BEARS AT BAY SEPT. 27: The Army contest will close exhibition operations and set the stage for the Packers' opening NFL contest here against the Chicago Bears Sept. 27. After the Bears, Green Bay invades Chicago for a night game with the Cardinals Oct. 4. Red Smith, free of his baseball duties with the Green Bay Bluejays, left Green Bay early today and is expected to arrive late tonight or early Wednesday.

LOOKING UP IN THE REALM OF SPORTS

SEPT 1 (Green Bay) - COACH GETS NO SYMPATHY FROM KIERAN: Sixteen members of the 1941 Green Bay Packer team are in the armed forces, and a good many of them were top notchers, too, but that doesn't evoke any sympathy from John Kieran, celebrated columnist on the New York Times and member of the Information Please radio feature. No sir, there is no sympathy from Mr. Kieran. Kieran's column appeared on the eve of the Packers' game at Brooklyn Sunday. Dodger fans has been bemoaning the loss of their club prexy, Captain Dan Topping, to the marines, and their head, Lieutenant Commander John Bain Sutherland, to the navy, and a half-dozen regulars to various branches of service. Along came Coach Lambeau with "a printed slip of Green Bay propaganda," listing the 16 players "loaned" to Uncle Same. "That's quite all right," Kieran commented. "Nobody was accusing Curly of hoarding. His club gave with everybody else. But they still have that Don Hutson, haven't they? Don is a good man to save for a clear day. He's a cagey and shifty gent and when he runs out and throws up his arms his fingers seem infused with some peculiar form of magnetism that unerringly draws flying leather in the form of a football. If the weather is clear and the ball is nice and dry for throwing, the quarterback of a team on defense against the Green Bay Monsters usually gathers his men and whispers: 'You guards and tackles stay in there and stop any line plays. The rest of us will stay back and try to surround Hutson.' No, Curly Lambeau needn't come around looking for sympathy as long as he has Don Hutson and somebody to throw him a football when the game is on."

PACKERS HERE FOR BIG GAME

SEPT 1 (Baltimore) - Bellhops, desk clerks and guests at the Lord Baltimore Hotel were treated to eyesfull of over-sized humanity yesterday when the Green Bay Packers football team rolled into town and took up their abode for the week. Everywhere one looked you could see one or more 200-pound or better young men lounging around killing time on what turned out to be a professional footballer's day off. The Packers had just bumped off the Brooklyn Dodgers and so Coach

Michalske Is Named Coach

Former Packer Guard
Will Handle Line at
Iowa State College

August (Mike) Michalske, former Green Bay Packer guard and assistant coach and recently line coach at St. Norbert college, has been named line coach at Iowa State college, according to an announcement today by Director of Athletics George Venker.



Michalske

Michalske replaces Douglas Kerr, who has been granted a leave of absence to serve as physical education instructor for the navy at Norfolk, Va.

A graduate of Penn State, where he had three great varsity years on the gridiron, Michalske started a brilliant professional career with the New York Yankees. After three seasons there, he joined the Packers in 1929 and played a total of eight seasons here.

Michalske left the Packers in 1934 to assist Ernie Nevers at Lafayette college, but returned in 1935 for his final season. During that year he also served as assistant coach to Curly Lambeau.

In the 1940 and 1941 seasons Michalske was line coach at St. Norbert college, and in 1940 he also coached the track squad.

Curly Lambeau sent his young giants on to Baltimore in care of Backfield Coach Eddie Kotal while he and Line Coach Red Smith took a postman's holiday and stopped over in Philadelphia to watch the Eagles play the Eastern College All-Stars...SCAN SPORTS PAGES: So down at the Lord Baltimore, 6-foot, 205-pound guard Bob Kuusisto, formerly of Michigan, and 6-foot, 2 1/2-inch, 220-pound tackle Ernie Pannell, an alumnus of Texas A. & M., clad in slacks and crew shirts draped themselves gracefully over the cigar counter and perused the sports sections of the papers. They were either looking for reports of yesterday's game or maybe just hunting a winner at Timonium. Out in the middle of the lobby, loftily surveying and being surveyed, was tackle Buford Ray, lately of Vanderbilt, who tips the scales at 245 pounds and looks down on the populace from around the 6-foot-6 mark. Languidly draped over settees and overstuffed chairs were the backs who laid claim to what the ladies call good looks, such as Cecil Isbell, Don Kahler, Don Hutson and others...START WORK TODAY: However, the big boys quit their loafing this morning and start for the Stadium to begin work for the game with the Washington Redskins next Monday night. Meanwhile, Laundryman George Marshall and his gaudy Redskins, after knocking off Major Wallace Wade's Western Army All-Stars, were speeding eastward for Baltimore. Included among the Redskins were such well-known figures as Slingin' Sam Baugh, the passing man from Texas; Wee Willie Wilkin, a small fellow weighing, only 269 pounds, and Anvil Andy Farkas. Added to these was a newcomer. Tiny Croft, who spreads 300 pounds over his 6-foot-3 frame and handles it well enough to play tennis, 'tis said...PASSING DUEL LOOMS: Of course, all these beefy young fellows will be on display at the Stadium but the highlight of the contest is expected to be the passing duel between Slingin' Sam and Pitching Cecil, two of the passingest footballers that ever threw a pigskin for Alma Mammy. While all of the big lads who make Green Bay their fall headquarters were lolling at ease in the hotel lobby a slender 130-pound advance man for the Redskins, Dick O'Connell, was rushing around answering telephone calls and trying to figure out ways and means of putting 40,000 people on the 50-yard line. It can't be done, of course, and so latecomers will have to content themselves with sitting somewhere between the fifty and the end zone. Advance sales indicate that desirable seats will be rare before the week is over.

PROFESSIONAL FOOTBALL

Washington Redskins **-VS-** **Green Bay Packers**

Labor Day Night—Sept. 7th
Baltimore Stadium, 8 P. M.

TICKETS NOW ON SALE AT

LORD BALTIMORE HOTEL NEWSSTAND (*Open every night till midnight*)
BELVEDERE HOTEL NEWSSTAND (*Open every night till midnight*)
E. & R. MEN'S SHOP, Balto. & Holliday Sts. (*Open every night till 9 P. M.*)
WONDER CLOTHES, Balto. & Liberty (*Open Saturday till 9:00 P. M.*)
NATES & LEONS, North & Linden Aves. (*Open 24 hours daily*)

RESERVED SEATS, \$2.21
General Admission, \$1.11

**Charley Brock to Be Ready for
Redskin Battle Monday Night**

CHARLEY BROCK TO BE READY FOR REDSKIN BATTLE MONDAY NIGHT

SEPT 2 (Baltimore) - Charley Brock, only veteran center on the Green Bay Packer team, will be ready for the Washington Redskin exhibition game here Monday night, Coach Curly Lambeau announced here today after watching his charges work out Tuesday afternoon. Brock came up with a shoulder injury after the first scrimmage in Green Bay a week ago last Saturday, and was held out of the Brooklyn Dodgers exhibition. While Brock rested, Bob Flowers, newcomer from Texas Tech, earned himself a lot of glory by playing 59 minutes of "outstanding ball", in the opinion of Lambeau. The other minute was played by Art Albrecht, former Wisconsin and Manitowoc High ace. The center position seems to be well fixed, what with Bob Ingalls, University of Michigan All-American, in camp and raring to go. Ingalls took his first workout Tuesday afternoon playing with the Eastern College All-Stars against the Philadelphia Eagles on Monday night. Lambeau praised the play of Ingalls in the Star-Chicago Bear tussle in Chicago last Friday, and, after watching the Philadelphia affair, stated that "Ingalls showed the same spirited play he showed against the Bears." Brock spent four hours with Ingalls Tuesday, acquainting him with assignments. Addition of Ingalls gives the Packers three topnotch centers and a good replacement in Albrecht...PHOTOGRAPHERS BUSY: The Packers held their first practice session since leaving Green Bay last Thursday. They drilled in the Baltimore Municipal stadium for three hours, one of which was used by photographers. A general limbering-up exercise program was held as well as a hard-running session. Lambeau

reported today that transportation is a big problem here. "There are absolutely no buses available and cabs are not plentiful. Half hour waits are common, but the boys are taking it good naturedly." The Washington game will start at 7 o'clock Monday night (CWT), and will feature Labor day programs in Baltimore...BACK NEXT TUESDAY: Lambeau and his boys will leave immediately after the game and will arrive in Green Bay early Tuesday night on the Milwaukee road. Intensive practice sessions will be launched at the City stadium practice area early next Wednesday for the important exhibition contest with Major Wallace Wade's Western Army All-Stars in Marquette stadium in Milwaukee Sunday, Sept. 13.

COACH TALKS ON GRID RULES

SEPT 2 (Baltimore) - Football coaches, sports commentators and members of the press heard Earl (Curly) Lambeau explain the difference between pro and college football rules at a luncheon given yesterday at the Lord Baltimore Hotel. Dick O'Connell, public relations director of the Washington Redskins, was host to the gathering which also included Ed Kotal, who played for the Packers from 1925 to 1929 and who returned to the club this year to serve as backfield coach...TOUCHDOWN CLUB: The secondary purpose of the gathering was to lay the groundwork for the organization of a touchdown club for downtown quarterbacks which have become so popular in other cities. Further steps in the plans will be taken at a similar luncheon next Monday. Lambeau, who played under Knute Rockne as a halfback on the 1919 team with the famous George Gipp, stated that football was and is a great game and that it is not the intention of pro leaders to drastically alter any of the rules. Whatever changes have been made were for the purpose of speeding up the game and increasing the spectator interest. While there are many minor variations between the two styles, there are but five major



TROUBLE AHEAD FOR PACKERS— One of the outstanding fullbacks in the nation two seasons ago, Jarrin' John Kimbrough is now a member of Uncle Sam's forces and he'll be very much in evidence when the Green Bay Packers meet the Western Army All Stars Sunday, Sept. 13, at Marquette stadium. Kimbrough is heralded as the backbone of the Army powerhouse attack.

differences. Probably of most importance is the forward pass rule. In college ball the passer must be at least five yards behind the line of scrimmage when he gets the toss off, while the pros are more dangerous on the offensive since it is possible to fake an end run or a line play and then pass so long as they are not over the scrimmage line...**PROS MUST STOP RUNNER:** Secondly, the pros must bring their man to earth and hold him while the college rules make a ball dead at the spot where any part of the runner's body touches the ground even though he should slip without even being tackled. Next the pros on the defensive have the advantage of being allowed to recover and run with a loose ball. Then in college unlimited substitutions are permitted, while pros can enter the game in each of the first three periods and in the last quarter any two men can be inserted into the lineup twice. Last of the major changes is the location of goal posts which in college play are placed on the end zone while in pro games the posts are on the goal line to give an added incentive to try for field goals in many instances instead of punting. Lambeau, whose Packers will meet the Redskins in the Stadium here on Monday night, is the man most responsible for the growth of professional football...**FIRST PRO OUTFIT:** Immediately after his graduation from Notre Dame in 1919, Curly obtained the backing of the owner of a cheese packing establishment in Green Bay for the first-string team of a pro outfit. Hence the name Packers. At the end of the season Curly and eighteen substitutes each received \$16.50 as his share of the profits. This did not dim Curly's faith in the game, however, and now week after week the leading pro teams play before sellout crowds. In the game Monday night two of the game's greatest passers, Slingin' Sammy Baugh and Cecil Isbell, will be seen in action. Don Hutson, probably the greatest end of all time, will also do his stuff. Hutson, who is starting his eighth year as a pro player, holds practically every record that has to do with scoring and catching passes in professional football. So great is his ability in this line that many overlook the fact that he is tops in converting points after touchdowns.

ACE PASS COMBINES IN LABOR DAY FRAY

SEPT 2 (Baltimore) - When the Green Bay Packers, already on the scene of action, and Washington Redskins meet at the Stadium Monday night fans will see a pair of pro elevens which really believe in "all-out" attack. On the ground or in the air the Packers and Skins are offensive minded, taking full advantage of the rules of professional football to please the paying clientele...**FAVOR AIR LANES:** As

Earl (Curly) Lambeau, Green Bay coach, explained yesterday at a luncheon here, "The pros wanted to open up football, and, toward that end, made a few changes in the college rules to permit plenty of offensive action." Lambeau and Ray Flaherty, boss man of the Redskins, believe the quickest way to a touchdown is through the air lanes and they see to it their



Bill Conatser is another of the Texas A. and M. stars making the Western Army All-Stars one of the most powerful offensive machines ever assembled. They'll meet the Green Bay Packers in Milwaukee Sunday, Sept. 13. A flashing running back and a fine kicker, Conatser is again running mate to John Kimbrough, Pugh and Andricks, other Lone Star state headliners performing for the soldiers.

charges toss the pigskin. Of course, both coaches have the men who can handle this assignment. Two of the best passers in the business, Cecil Isbell of the Packers and Slingin' Sammy Baugh of the Skins, head the throwing brigades...ISBELL AND HUTSON: Isbell, or course, is fortunate in having such a receiver as Don Hutson, one of the greats of the pro game. "Hutson is a great pass catcher," said Lambeau, "because he never takes his eye off the ball. Many receivers make that mistake at the moment of catching. Not Hutson. He makes sure of the pass before worrying about tacklers. He has excellent coordination and a smart head. Don takes good care of himself and is never lacking for condition."...HOLDS LOOP MARKS: This Green Bay star holds just about all the pro league records there are worth holding. It will be interesting to see Isbell and his pass catching mate in competition with Baugh.

NO 'FOOLIN' ABOUT PACKER TICKET DRIVE

SEPT 3 (Green Bay) - There's no fooling about this Packer season ticket drive next Thursday - a week from today. Sometimes a public-spirited project is undertaken with the best of intentions, but the thing starts to fizzle out even before it gets underway. There is no sign of anything like that happening in this case. Mechanics of the campaign were set up during a meeting of captains and other workers at the Beaumont hotel Wednesday night. One hundred and forty-six Packer boosters have promised to participate. The campaign is being sponsored and directed by the Green Bay Association of Commerce, headed by President William Servotte, Secretary Earl S. Ward and Don Fairbairn, publicity and public relations chairman..."PACKERS NEED HELP": "We greatly appreciate this help from the Association of Commerce," declared L.H. Joannes, president of the Green Bay Packers, Inc. "I want to be frank with you - the Packers need your help." Joannes pointed out that it has become increasingly difficult to schedule NFL games in Green Bay, since only the annual clash with the Chicago Bears can be depended upon to draw a large attendance. Approximately 2,000 season tickets have been sold so far this year, while the total sale last year was approximately 2,900. It is hoped that the special drive next Thursday will help to break all records for season ticket sales in Green Bay. "Many fans have told me they would buy season tickets if they were approached," Joannes added. "There is good reason to expect that your campaign will produce excellent results."...SET UP ORGANIZATION: Many of the session on Wednesday evening was devoted to setting up the campaign organization. Twelve teams were formed, the captains "drafting" their workers from typewritten lists. Each team will be known by the name of one of the National league clubs...SURE OF SUCCESS: "Every one of the 146 volunteers has promised to devote his fullest possible attention to the drive," Ward stated. "I am confident that we have an organization that will assure the financial success of the Packers." Business and industrial sections of the city were broken up into 70 territories, with seven assigned to each captain. The captains will allot one territory to each pair of workers. The two workers who produce the best results will be awarded footballs autographed by the Packer squad. Members of the high team will receive framed photographs of the 1942 eleven. On the morning of the campaign the entire organization will assemble at the Beaumont hotel for breakfast and final instructions. In the evening there will be a 'victory' dinner, with the reports to be followed by an interesting program...WON'T COLLECT MONEY: The workers will not collect cash in the drive but will obtain signed pledges from the fans. Payment will be made later in the followup work of the Packer ticket office. Prices of season tickets range from \$3.30 to \$8.25, and result in savings up to \$2.20 from the price of single tickets for the three games - Chicago Bears Sept. 27, Cleveland Rams Oct. 18 and Chicago Cardinals Nov. 1.

The teams and captains include:
Green Bay Packers — Frank Buth Jr.; Chicago Bears—Frank Gallagher; Detroit Lions — Ralph H. Drum; Washington Redskins—Edward Wochenske; Pittsburgh Steelers—Harry Masse; Chicago Cardinals—L. L. Leland; New York Giants — Russell Bogda; Brooklyn Dodgers—A. W. Bouffard; Philadelphia Eagles—Dominic Olejniczak; Cleveland Rams—Andrew A. Klein.

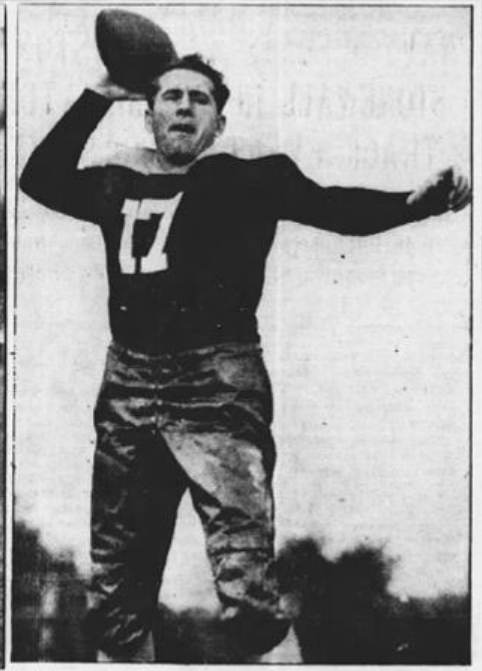
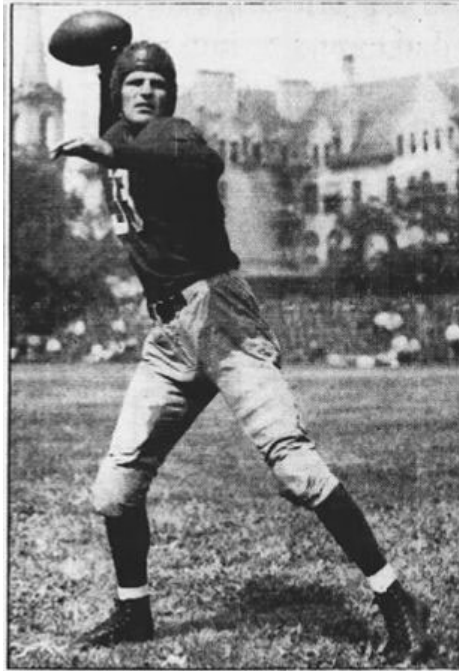
PACKER GRAD PLEASED ABOUT NEW JOB

SEPT 3 (Green Bay) - Mike Michalske is quite excited, for a full-grown man, about landing that line coaching job at Iowa State college. He was in Ames last Saturday to size up the situation before making up his mind, and was quite pleased at what he saw. Since his present contract calls for only a year, he will be back after the football season. They offered him work for the whole school term, but Mike didn't sail for that because the college authorities aren't looking any farther ahead than a year. He is leaving his family in De Pere for the several months he will be gone. Mike has little information about football prospects there, but he'll find out soon enough because practice starts next Monday. The school has an enrollment of something like 4,600 men students and 1,500 coeds. In addition, several thousand servicemen are receiving military training of various types on the campus. Of his work at St. Norbert college Mike had only the nicest things to say. He was the line coach there for the past two seasons, and also handled the track squad in 1940. When he returns several months hence he may lend Athletic Director T.G. Fox a hand again. He also has a full program of basketball officiating lined up for the winter. Mike, who played eight great seasons at guard for the Packers, bowed out of the professional game in 1937. He remembers the occasion very well. "A certain Mr. Cardwell jumped on my back in Detroit," he explains. Mike has had some

previous coaching experience. In 1936 he took a year's leave from the Packers to assist Ernie Nevers at Lafayette college. The following year, after quitting football, he went back to Lafayette for the basketball season.

HINKLE WILL HELP COAST GUARD COACH

SEPT 3 (New London, CT) - Backfield men on the Coast Guard academy football team will get some expert coaching this fall, especially in the kicking department. Clarke Hinkle has been added to the coaching staff. Hinkle, fullback for the Green Bay Packers for ten years and before then a Bucknell star, joined the Coast Guard recently and will report to the academy some time this week. An expert booter of field goals as well as a linebacker of note, Hinkle was one of the National league's high scorers.



PITCHERS FOR TOMORROW'S GAME—Slingin' Sam Baugh (left) of the Washington Redskins and Pitchin' Cecil Isbell of the Green Bay Packers will do the chucking

for their respective teams in tomorrow night's pro football game at the Stadium. These two young men are considered the two best forward passers in the football business

KIMBROUGH HERE WEEK FROM SUNDAY

SEPT 3 (Denver) - The All-Army football team, coached by Maj. Wallace Wade, was tightening its defense here today as it concentrated on the four objectives yet to be cleared for the benefit of Army Emergency Relief, in games against the Chicago Cardinals, Detroit Lions, Green Bay Packers and New York Giants. And it becomes more obvious that it is featuring John Kimbrough, who must spearhead the attack. Major Wade will rely heavily on the Texan's defensive ability in the game with the Packers, headed by the feared passing combination of Cecil Isbell and Don Hutson, on Sunday afternoon September 17 at Marquette stadium, Milwaukee. And "Kim" can carry the load, too. The power laden Texas A&M fullback was just about the whole show last Sunday against the Washington Redskins in Los Angeles. It was he who broke the scoring ice when on the second play of the game, he crashed over left guard, reversed his field with the agility and grace of Fred Astaire, and rumbled 58 yards down the sideline to a touchdown. Shortly thereafter, Kimbrough broke the back of the first Redskin drive by intercepting Sammy Baugh's pass on the Army 7-yard line and lugged it back almost 10 yards before a horde of irate Washingtonians swarmed over him. It was Jolting John too who supplied all the sparkle in the Army attack. That Kimbrough couldn't do it alone is obvious. But given a fair share of aid he can be a mighty destructive force. It wasn't his fault that the soldiers went down before the peerless pitching of Baugh and the stomping runs of Dick Todd, an iron legged, tireless ball carrier, all afternoon. The main trouble was lack of practice. The two weeks of work weren't enough for the Army warriors. The precision and timing weren't there, and there were several blatant defensive flaws that time and Major Wade are sure to eradicate.

EXPECT 60,000 FOR PACKER TILT

SEPT 2 (Baltimore) - Green Bay's Packers and the Washington Redskins will play their exhibition football game before a capacity crowd - 60,000 persons - in the Municipal stadium here at 7 o'clock (CWT) Monday night. More than 33,000 tickets have been sold already, and 10,500 tickets were handed out to servicemen free of charge. Only 16,000 seats remain unsold and there is a constant demand. Major Percy Clapp of Camp Meade, former Lawrence college coach, ordered 100 of the best seats for the camp officers...**NAVY FOR GREEN BAY:** Major Clapp has visited with the team and Coach Curly Lambeau and promised that the Navy will be cheering for Green Bay. Ernie Smith, former Packer tackle, warned Lambeau today that Washington is the toughest team in the Eastern division of the National league because they lost few men. Smith scouted the Redskins in Los Angeles in their game with the Western Army All-Stars, and said they were in midseason form. With George Dobash and Tom Bushby gone, the Packers have only Larry Craig and Ben Starrett at the blocking back position. Don Miller, Wisconsin, is learning the blocking back plays as well as those of right half. Tony Canadeo received special attention in passing during Wednesday's practice, after Lambeau noted that 'we missed several opportunities in the Brooklyn game.' Bob Ingalls, the new center, is fitting into the Packer system fast and may see plenty of action against Washington.

GREEN BAY PACKERS WORK ON PERFECTION OF TIMING AND BALL HANDLING

SEPT 3 (Baltimore) - "Come on, let's look like a ball club." Curly Lambeau, coach of the Green Bay Packers, thus admonished his boys at Clifton Park yesterday, where the pro team went through its first real workout in preparation for the

game here Monday night with the Washington Redskins. They needed the direction from their bland, rotund coach, who also is vice-president and one of ten directors of the big team representing the smallest city in pro football. They didn't look so good - at first...**WORK WITH SNAP:** But before the workout of an hour and a quarter was completed, they were clicking on their passes, running with a snap, and executing some intricate maneuvers in signal drill with sufficient skill to satisfy Lambeau and his aides, Eddie Kotal and Red Smith, who have charge of the backs and linemen. The players missed their chance to talk back. The coaches waited for transportation after the team had departed, and to while away the time, indulged in a football pepper game on the grassy slope outside the Poly field where the practice was held. Lambeau, Smith and Kotal can still handle the ball with skill. Kotal even picked it up with his two feet and flipped it into his hands after missing a pass. The backfield coach said he expected the details of timing, precision and control in ball handling would be all right by tomorrow, declaring the layoff since the game in Brooklyn on Sunday was enough to throw the players off until practice would bring them around again. One of Don Hutson's teammates advised the great end to run at top speed, and the Southern boy drawled: "I used to do that, but I'm losing speed all the time." (Note to the Redskins - He was only kidding.)

PACKER '11' AT WORK

SEPT 3 (Baltimore) - Working out daily at Clifton Park, Curly Lambeau's Green Bay Packers realize they will have to unfold some of their very best football on Labor Day night when the Washington Redskins are met at the Stadium. The visitors from the West know that Ray Flaherty's Washington outfit, which arrives home today, is still smarting from a 22-17 defeat administered last November and are out for revenge...**PROS NEVER FORGET:** That was the game in which the Redskins held a 17-0 lead going into the second half when Don Hutson, the Packers' sensational pass catcher, ran wild and scampered into the end zone for three electrifying touchdowns. Pro teams don't easily forget these things and Lambeau knows Flaherty has been laying plans for this gridiron battle for some time. That there is trouble ahead for Green Bay was shown when the Washington unit turned in a neat 26-7 triumph over Major Wallace Wade's Western All-Army eleven in Los Angeles...**SKINS' ATTACK VARIED:** Though the Skins have a strong complement of operatives, the mainstays of the attack are Sammy Baugh, the pigskin pitcher; Dick Todd and Andy Farkas, the latter pair a set of excellent ball carriers. This trio offers a variety of attack. However, it is hard to overlook the excellence of this Packer outfit with two men like Cecil Isbell and Hutson in the lineup. A couple of air-minded fellows, the former passing and the latter snaring the oval, they will furnish the opposition many uneasy moments...**VICTOR OVER DODGERS:** It was this combination that brought Green Bay from behind last Sunday to grab a 21-16 triumph over the Brooklyn Dodgers. Naturally everyone is interested in Isbell and Hutson, but the Packers have numerous other performers of rare quality. There is Lou Brock, for instance, a grand runner. And then last Sunday Bob (Tiger) Flowers, recruit center from Texas Tech, demonstrated that he can be counted upon for some fine ball by Coach Lambeau.

Coach Lambeau Hopes for Success in Ticket Campaign

COACH LAMBEAU HOPES FOR SUCCESS IN TICKET CAMPAIGN

SEPT 4 (Green Bay) - Coach E.L. (Curly) Lambeau of the Green Bay Packers today congratulated the 146 "players" and "coaches" who have enlisted as workers in the Packers season ticket drive next Thursday." The coaching staff and the entire squad of the Green Bay Packers join me in thanking you for setting aside one day in your valuable time to help sell season tickets in next Thursday's drive," Coach Lambeau declared in a letter to the 146 volunteers. "During the many years I have been connected with the Green Bay Packers, the one thing I have always felt we needed most was a group of live-wire Packer fans like yourself, who would give some of their time each year toward putting on a citywide drive for season tickets. Now that we've started on a program of this type, I hope we can do a real job of it Thursday, and then keep the same gang with the same spirit intact to follow on in the same way in the years to come."...**BREAKFAST IS PLANNED:** The Bay coach, now in Baltimore for a Labor Day exhibition with the Washington Redskins, said that he, along with Assistant Coaches Red Smith and Eddie Kotal, will be present at the kickoff breakfast at the Beaumont hotel Thursday morning. The entire Packer squad will attend the victory dinner in the evening following the drive. Thousands of prospective purchasers will be contacted in the block by block canvass of the business and industrial sections of the city. Money will not be collected but a pledge promising to pay a representative of the Packer ticket office will be signed by each ticket buyer. There are many reasons why there should be a large season ticket sale, and all of them are good ones. Many fans appreciate the fact that they can save up to \$2.20 for the three home games this year. Season tickets cost from \$3.30 to \$8.25 for the three

games - the Chicago Bears Sept. 27, the Cleveland Rams Oct. 18, and the Chicago Cardinals Nov. 1...**BIG CROWDS NEEDED:** Besides the various other advantages to the fans, such as the assurance of having good seats for every game, it is vitally important that the Packers have a large turnout each time. If the Packer directors can show that Green Bay is all-out for the Packer team, they can go the annual meeting of the league and get more and better home games. The one-day drive will be conducted on a team basis, with the solicitors working in pairs. The team captains are known as coaches, and each has taken the name of one of the clubs in the National league.

REDSKINS WORKING ON PASS DEFENSE

SEPT 4 (Baltimore) - On arrival home yesterday, the Washington Redskins' first practice for their game at the stadium here Monday night was on pass defense, and for a good reason. Coach Ray Flaherty's club will run up against the toughest passing combination in the professional football league - Cecil Isbell to Don Hutson...**DANGEROUS COMBINE:** The Skins' mentor doesn't think Green Bay is quite as strong as last season but he knows full well that, with Isbell to throw and Hutson to catch, the Curly Lambeau machine is dangerous every minute its on the field. Therefore, Flaherty lost no time in getting to work on pass defense with the hope his charges can stop the Packers' aerial maneuvering. He is depending a lot upon Dick Todd and Wilbur Moore to tighten up the defense. Last year the latter missed the Green Bay game due to an injured shoulder...**HUTSON ELUSIVE CHAP:** Discussing the coming game. Flaherty said: "Going after Don Hutson is like chasing a scared rabbit. You find yourself running along with him, thinking you have him covered and the next thing you know he is five yards out in front of you with the ball in his hands and going for a touchdown. Hutson is as smart as they come and has made an art of catching passes," continued the Redskins' mentor. "No other man in the league can match him. Notice how Isbell usually leads him toward the sidelines, yet Hutson never makes a break for the ball until about six yards from the sideline. Then zowie! he's off and you are out there running for your health."...**TELLS OF THE DIFFICULTY:** "And there is another thing," said Coach Flaherty, warming up to his subject. "You can't play deep on him, or he'll catch a short pass. And you can't play him close or he'll run right by you. Still, you've got to play him close to even get a crack at the ball, and then the chances are he'll grab it anyway." Flaherty believes Todd and Moore should be able to keep up with him in the speed department and hopes Hutson just won't outsmart the pair. "Everybody will make some mistakes," he remarked, "but if he fools Todd and Moore he's a lot smarter than I think because they are two of the best defensive back in the league." The Washington squad will get in four days of real work on their home field, while Green Bay is toiling her mostly at Clifton Park for the fray.

HARD TURF MEANS SORE FEET FOR PACKERS; THOUSANDS SEE DRILLS

SEPT 4 (Baltimore) - A shortage of rain worked up a hardship for the Green Bay Packers Thursday as they drilled for their exhibition game with the Washington Redskins here Monday night at 7 o'clock (CWT). The Packers found the ground "hard as a rock", resulting in sore feet for most of the players. This city hasn't seen rain in more than a month. No other injuries at the drill were reported, witnessed by several thousands persons. Coach Curly Lambeau reported that Tex Hinte, new University of Pittsburgh end, looked good on defense. Hinte, who reported to Green Bay several days before the Bays left for the east, did not get into the exhibition at Brooklyn last Sunday but is expected to play against Washington. Radio station WTMJ will broadcast the game from Baltimore starting at 7 o'clock Monday night. Russ Winnie will give a play-by-play description from the field. In a scrimmage session, a combination of Tony Canadeo at left half, Bob Kahler at right half, Ben Starrett at blocking back and Ted Fritsch at fullback was effective, making good gains against the Packers' veteran line. On a dash through the tackle and guard slots, Fritsch picked up 40 yards and on another occasion Canadeo scampered 35 yards on a sweep while Fritsch was faking a line buck. Two rookie right ends, John Stonebraker and Earl Ohlgren, brought a few smiles with their work in rushing passers, while Kahler looked exceptionally well on pass defense. Cecil Isbell, leading pitcher on the Packer corps, looked better than even in the Thursday drill, according to Lambeau, and teamed well with Andy Uram. Isbell was at left half and Uram at right half. Among other new items fluttering from the Baltimore camp was the announcement that Line Coach Red Smith had arrived. The alarming note was that Smith, manager of the Bluejay baseballers, was 15 pounds

Personnel of Teams

Making up the campaign personnel are the following:

Philadelphia Eagles—Coach **Dom** Dominic Olejniczak, Al Michael, Eddie Fonferek, H. J. Bero, James Stathas, Les Kelly, Bill Goodwin, E. A. Bode, Walter Scherf, Ralph Creviston, Louis Levitas, Leo Hobbins, Lloyd Hansen, Gerald F. Clifford, Art Schumacher.

Green Bay Packers—Coach **Curly** Frank Buth Jr., Harry Conlon, George Stevens, Vance Jones, Charles Nye, Edwin Schweger, Finley Peacock, George Clancy, Fred Murphy, Arnold Stiller, Pete Dorschel, George Doherty, Harry Berman, O. W. Woodall, Al Fleck.

Brooklyn Dodgers—Coach **Al** W. Bouffard, Ed Den Dooven, Harry Johnson, John Delaney, Henry G. Wintgens, August Reimer, Gerald L. Hopkins, Frank Haanen, L. H. Joannes, Peter Platten, Marcus Hoefs, Emil Fischer, Choppy Lawton, Al Arndorfer, Al Schneider.

Washington Redskins—Coach **Ray** Edward Wochenske, John Howland, John E. Paeps, Edward Bedore, Rudolph F. Schmitz, Mike Carrigan, George Sterck, Les Atkinson, Cliff Wall, Don Wright, W. F. Tyson, Joe Delwiche, J. F. Ashbrook, Howard Stram, W. H. Wegener.

New York Giants—Coach **Russel** Bogda, Bud Levitas, Charles Beauvais, Charles Mathys, Elmer Stone, Milan Boex, Art Juster, Sam Moglowski, Walter Herrman, Gordon Maes, A. F. Toppins, Sam Cohen, John Ross, P. R. McGinn, S. M. Greiling.

Chicago Bears—Coach **Frank** Gallagher, M. M. Rogoff, Bill Taylor, Morris Maloney, Harvey Barthels, Earl Jones, Edward Schwechel, Harry Conley, Norman Peters, Nate Zucker, Louis Peal, Jack Cornell, R. M. Tetzlaff, Vern Bushman, Gene Miller.

Chicago Cardinals—Coach **Larry** Leland, Pat McGoldrick, George Bertrand, Andy Tweet, Ray Pagel, Emmett Platten, Al Manders, Clarence Dashnier, Henry Pahlow, A. C. Witteborg, Frank Walker, Walter Masse, Robert Busse, Clem Simonet, W. H. Berry.

Cleveland Rams—Coach **Andy** Klein, Ed Miller, Ray Decker, Gordon Bent, Otto Stiller, Fred Leicht, William Polrier, George Kress, E. H. Berners, Frank Kellermen, Clem Seibel, P. A. Servais, Frank Cartier, Dom Flatley, Dr. E. V. Harrington.

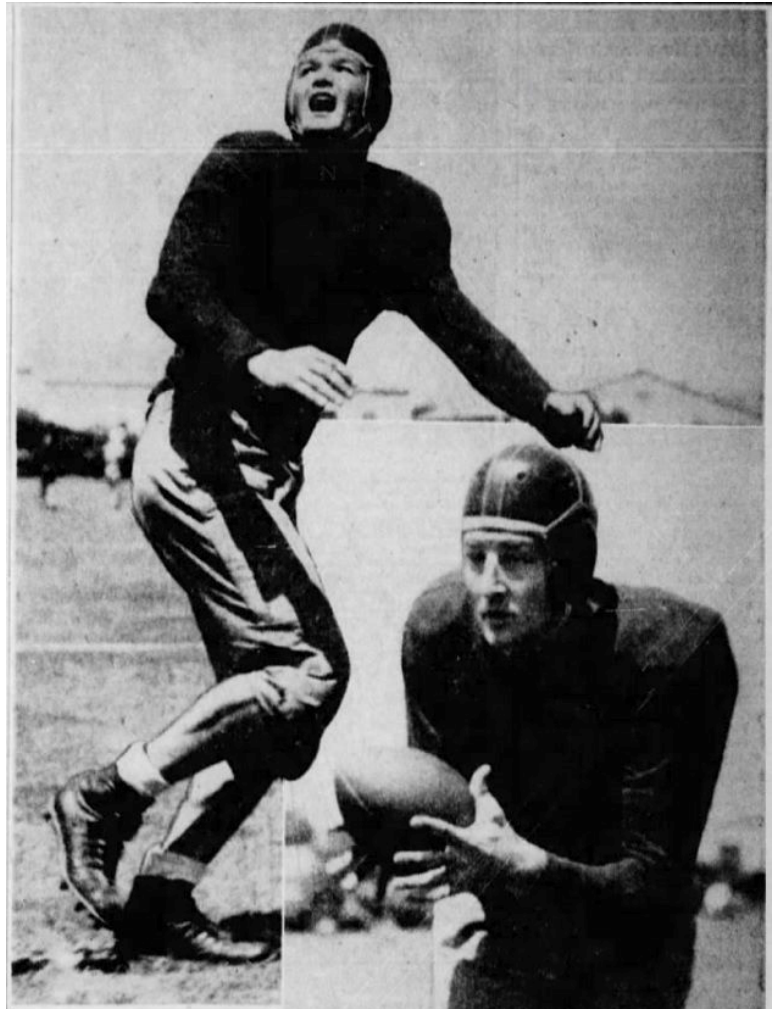
Detroit Lions—Coach **Ralph** H. Drum, Ed Hasbrook, Rudy Lies, Harvey L'Host, J. C. Basten, Ed Van Drisse, Vince Jacobs, John Moffatt, Harry Golden, Ray Zinkel, Frank Massopust, Tom Dwyer, Ralph Soquet, Matt Van Lanen, Elmer Meyer.

Pittsburgh Steelers—Coach **Harry** Masse, Paul Van Laanen, Arnie Blahnik, Herbert J. Olson, Elroy Van Oss, Ed Mathot, Joe Crevcoire, Al Robinson, Les Zeibel, Elmer Brennan, Bob Brebner, Russ Bailey, John Kircher, George Larscheid, A. A. Allen.

"underweight", and Packer observers were inclined to believe that Smith's worries about the Sheboygan Indians might have had something to do with it...**BREAK TRAINING RULES?:** Upon arriving in camp, Smith asked Coach Lambeau permission to break training rule on money for a new pair of football pants. The Packers may get another "rough session" today, and the team will taper off with light drills Saturday and Sunday. The Wisconsin giants will entrain for Green Bay at 11:30 Monday night and arrive in Green Bay on the Milwaukee Road at 9:50 Tuesday night. Preparations for the stiff struggle with the Western Army All-Stars in Milwaukee Sunday, Sept. 13, will start Wednesday morning.

HUTSON RESTS FROM WORKOUT

SEPT 4 (Baltimore) - Don Hutson, the Green Bay Packers' star end, rested for the most part while his teammates went through a long and tough practice session at the Clifton Park playing field yesterday. Don complained of sore feet after the practice of the day before, and a number of his mates bemoaned "Baltimore dogs", as they put it, after running on the hard ground yesterday. Coach Curly Lambeau really made them sweat, ordering a portion of scrimmage with the defense arrayed in blocking pads to prevent injury. The split-second timing of plays, perfection of assignment and sharpening of maneuvers in which option of running and passing is possible were all given the attention of the coach and his aides, Eddie Kotal and Red Smith...**LOOK BAD IN PRACTICE:** So far the precision in passing is concerned, the Packers once again did not look too good. But they have a reputation around the league of looking terrible in practice and even in warming up, only to go into action and look like the champions they had been in five of the last twelve years. There is some early season difficulty this year in getting the new players to fit into the plays which are being in at this time. Normally, the veterans are on hand in sufficient number to make the process more gradual, but of the 1941 Packers, there are five in the Army, eight in the Navy, one each in the Coast Guard and Marines. That makes it necessary to have some of the new men ready at once to take over, and they will be groomed in the preseason games. They were given lots of chance against Brooklyn, and will be sent into action here, too...**MATTER OF PRIDE:** There is, of course, no idea of disregarding the team's chances against the Redskins in this effort. The Packers want to win Monday night, and they know the Washington players are dead anxious to reverse the decision of last year. They do not meet in regular league combat, so from a matter of pride each club wants to take the game here. The Packers will practice today at Clifton, work out tomorrow night under the lights at the Stadium, and return to Clifton for their final preparations on Sunday...The big guys keep the kidding rolling along all the time. Bill Lee, the All-American tackle from Alabama, is the butt of many a jibe from Hutson, a teammate of Tuscaloosa days. Lee was defensive right tackle when the opposing end sneaked away on an end around. The outraged coaches wanted to know why nobody on the defensive side of the line called the play. Lee chirped: "I didn't see him, or I would have called."



This was just for the photographer, but it might serve as a warning to the Green Bay Packers that Lieutenant Walter Young (upper left) will be set to snare any passes that come his way Sunday afternoon, Sept. 13. That is the day the Packers meet Major Wallace Wade's Western All-Army football team in Marquette stadium, Milwaukee. Lieutenant Young was an Oklahoma end. The other grizzer is Lieutenant Bob Peters, star halfback and another of Major Wade's threats.

Tickets for the game, sold through the usual Packer channels, are moving briskly. Prices are \$1.10, \$2.20 and \$3.30. There are, in addition, 1,000 "donation" seats at \$25. Proceeds will be turned over to the Army Emergency relief fund.

...The big guys keep the kidding rolling along all the time. Bill Lee, the All-American tackle from Alabama, is the butt of many a jibe from Hutson, a teammate of Tuscaloosa days. Lee was defensive right tackle when the opposing end sneaked away on an end around. The outraged coaches wanted to know why nobody on the defensive side of the line called the play. Lee chirped: "I didn't see him, or I would have called."

Hutson let him have it. "We'll get you that alarm clock," he drawled...Lambeau himself kids a bit. Ernie Pannell, the Texas A. and M. tackle, intercepted a bullet pass. Lambeau laughed: "That's right, Ernie, intercept it. Then you run that way." Harold (Tex) Hinte, a six-footer from the Pitt Panthers, is playing his first year at end with the Packers and showing plenty of pep in practice. He has friends here who arrived recently and he doesn't know their addresses, but is anxious for them to get in touch with him at the Lord Baltimore Hotel, Packer headquarters.

Bays People's Choice In Washington Game

Webb Not Coming

Transportation difficulties will prevent Babe Webb, Hawaiian backfield star, from joining the Green Bay Packer squad, Coach Curly Lambeau was informed today. Webb, signed by cablegram from his home in Honolulu about a month ago, has taken a high school coaching job in Honolulu. He expected to take a Clipper or boat to San Francisco but could not book passage.

BAYS PEOPLE'S CHOICE IN WASHINGTON GAME

SEPT 5 (Baltimore) - Home of the world's largest copper refining and alcohol plant, Baltimore will take time out Labor day to adopt the Packers. The Maryland citizen, a stone's throw from George Marshall's Washington Redskins, are going all out for the Wisconsin giants, and have purchased all seats on the Packer side of the huge Municipal stadium for the exhibition contest. Approximately 60,000 persons - a complete sellout - are expected for the tilt which will start at 7 o'clock Monday night, Green Bay time. Only a few seats in the end zones remain unsold, and they'll be snapped up in a hurry over the weekend. Russ

Winnie, the WTMJ sportscaster, will be on hand to give a play-by-play description of the game. The broadcast from the Milwaukee station will start several minutes before 7 o'clock. The Packers became the darlings of Baltimore as soon as they arrived last Monday. Fans by the thousands turn out for the daily practice sessions at Clifton park and hundreds of boys are continually hounding the players for autographs. In fact, Coach Curly Lambeau is somewhat worried about "finger cramps". Among the prominent visitors in Baltimore this weekend are George Halas and his Chicago Bears and Arch Ward, sports editor of the Chicago Tribune. The Bears are scheduled to meet the Pittsburgh Steelers in an exhibition game at Pittsburgh at 9 o'clock tonight...**PENCILS ARE SHARPENED:** The entire Bear squad and, of course, Mr. Halas have their pencils sharpened for the Green Bay-Washington contest. Lambeau and his Packers are looking for all sorts of trouble Monday evening. The Redskins, top team in the Eastern division despite the efforts of Coach Ray Flaherty to give the title to Brooklyn, lost only seven members of last year's squad. Besides, the Redskins have a little matter of revenge to settle with Green Bay - that heart-breaking 22-17 defeat the Packers plastered on the Redskins late last season. Washington, it can be recalled, was leading at the half, 17 to 0. Green Bay and Washington will not meet in league play this season. A double workout was scheduled for the Packers at Clifton park today, one this morning and one tonight to let the team to get accustomed to the lights. No outdoor practice is scheduled Sunday, but a skull session will be held at 10 o'clock Sunday morning at the Lord Baltimore hotel where the Packers are quartered...**STRESS RUNNING ATTACK:** In the morning drill today, the Packers' running attack was stressed. Lambeau wasn't satisfied with the running against Brooklyn, the Green Bay picking up only 60 yards by rushing compared to 134 for Brooklyn. With the important Western Army All-Star exhibition in Milwaukee a week from Sunday, the Bays will let no grass grow under their feet in leaving here Monday night. They'll put out at 11:30, about two hours after the game and arrive home on the Milwaukee Road at 9:50 Tuesday night. Stiff workouts are booked

Lineup

The probable lineup for the Packer-Redskin game tonight follows:

No.	REDSKINS	Pos.	PACKERS	No.
28	Masterson	L.E.	Mason	17
36	Wilkin	L.T.	Ray	44
39	Stralka	L.G.	Letlow	46
38	Aldrich	C.	C. Brock	29
51	Shugart	R.G.	Goldenberg	43
17	Davis	R.T.	Lee	40
32	McChesney	R.E.	Ohlgren	23
11	C. Hare	Q.B.	Craig	54
33	Baugh	L.H.	Laws	24
13	Justice	R.H.	Uram	42
44	Farkas	F.B.	L. Brock	16

RESERVES

REDSKINS—Ends Krueger (14), Titchenal (18) Kovatch (40) Cifers (43). Tackles: Watts (15), Young (37), Beinor (45), Croft (55). Guards: Slivinski (16), Farman (21), Zeno (27). Centers: Carroll (26), Smith (47). Backs: Goodyear (12), Zimmerman (22), Poillon (25), Juzwik (30), R. Hare (42), Whited (48), Deal (53), Moore (35), Seymour (30), Todd (41).
GREEN BAY—Ends: Mason (7), Stonebreaker (51). Tackles: Berezney (47), Pannell (22), Vant Hull (18). Guards: Bucchianeri (12), Finley (72), Kuusisto (45), Tinsley (21). Centers: Albrecht (19), Flowers (35), Ingalls (15). Backs: Bushby (37), Canadeo (3), Dobosh (53), Fritsch (64), Kahler (8), Isbell (17), Sample (38), Miller (27), Starrett (63).
Time of game—8 P. M. Place—Stadium.

for Wednesday, Thursday and Friday for the All-Star game which will be held in Marquette stadium the afternoon of Sunday, Sept. 13.

PACKERS CHALK UP 200 VICTORIES, 71 DEFEATS, 20 TIES

SEPT 5 (Green Bay) - The Green Bay Packers posted their 200th victory since 1919 when they beat Brooklyn in an exhibition game last Sunday. They have lost 71 and tied 20 contests. Sheboygan, now Green Bay's chief rival in baseball, took the worst licking Green Bay ever dished out, 87 to 0, in 1919. The Packers' worst beating was that 41-10 mess with the Chicago Bears in 1940. The Packers piled up their largest score in league play against Pittsburgh, 54-7, last year...**FARMER BOYS:** Lou Brock and Larry Craig are the only farmers on the '42 team. Brock does his farming in Stafford, Kan., and Craig digs in Central, S.C. Two newcomers, end John Stonebraker and center Bob Flowers, are in aviation during the offseason. Other unusual occupations: Paul Berezney, medical student; George Dobash, chemist; Earl Ohlgren, railroader; Ben Starrett, ship fitter; Fred Vant Hull, welder...**LARGEST PACKER:**

Don Miller, former University of Wisconsin ace, is the largest man in the Packer backfield. He weighs 220 pounds and stands 6-3. Baby Ray, of course, is the top lineman, packing 245 pounds around a 6-foot-6 frame. Ben Starrett, blocking back, would like the public to know that he is not married. Early press notices claimed that he's married and has a child. Art Albrecht of Manitowoc is the baby of the team, counting only 20 years, and three are tied for "old men" honors - Buckets Goldenberg, Bill Lee and Joe Laws, 31 years each...**EIGHT IN NAVY:** The Packers have contributed eight men to the navy, five to the army, one to the coast guard and one to the marines. Clarke Hinkle is the coast guardsman and Howard Johnson is the marine. The Navy men are Lee McLaughlin, Charlie Schultz, Carl Mulleneaux, Ed Jankowski, George Svendsen, Bill Johnson, Ed Frutig, George Paskvan and Harry Jacunski. The Army has Tom Greenfield, Herman Rohrig, Alex Urban, Hal Van Every and Bob Adkins. A number of the 1942 players are due for duty when the season winds up.

UNIQUE PACKER SPIRIT NEED IN TICKET DRIVE

SEPT 5 (Green Bay) - Football fans who are proud of what the Packers have meant to the city since the first team pounded the turf in 1919, and that seems to include every man, woman and child in Green Bay, will be invited to reaffirm their allegiance next Thursday. Thursday is the date of the first organized season ticket campaign to be held in the 24-year history of the "biggest team in the smallest city" of the NFL. It is no small project to maintain a major league football club in a city the size of Green Bay, even with the excellent support that has been given the Packers by the surrounding communities. Nothing but the unique "Packer spirit" prevented the club from moving to another city long ago, or folding up

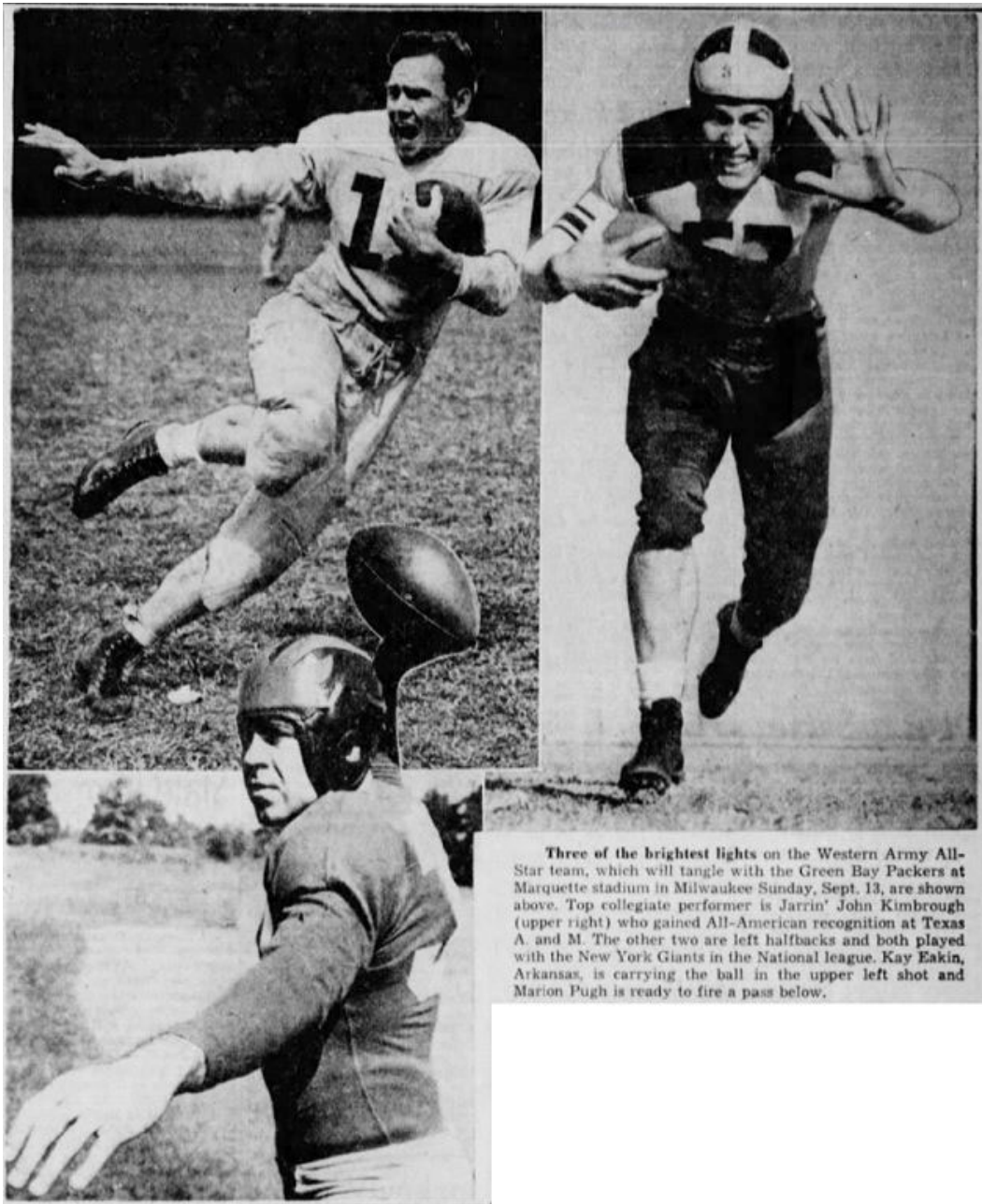
Football Rules, College And Pro

Since the Washington Redskins and the Green Bay Packers are to play in the Stadium tomorrow night under the pro football rules, and the majority of fans here are more familiar with the college code, the following contrast is presented:

College	Pro
Forward passer must be five yards or more behind line of scrimmage.	Forward pass permitted thrown from point anywhere behind line of scrimmage.
Goal posts on the end line, 10 yards behind goal line.	Goal posts on the goal line.
Five players of receiving team must remain within five yards of own 40-yard line until ball is kicked.	Receiving team on kickoff may line up anywhere.
Ball-carrier may not run again after any part of body except feet and hands touches ground.	Tackled ball-carrier may get up and run again unless held by opponent.
Defensive club may recover but not run with loose ball after it strikes ground.	Defensive club may run with loose ball.
No tee permitted on kickoff.	Two-inch earth tee may be used on kickoff.
Ball kicked out of bounds on kickoff put in play on receiver's 35-yard line.	Ball kicked out of bounds on kickoff put in play on receiver's 45-yard line.
Incomplete pass in end zone on fourth down brought out to line of scrimmage.	Incomplete pass in end zone on fourth down brought out to 20-yard line.
Player may be substituted at any time in any quarter.	Players may enter game only once in each quarter, except two may reenter in last quarter.
Clipping penalty 15 yards.	Clipping penalty 25 yards.

completely...THIS IS CRITICAL YEAR: Critical moments arose in previous years, but always the Packer fans came through. This is another critical year. Because of the war the number of spectators who have been driving many miles by automobile will be reduced. Green Bay fans are being called upon to make up the difference. So far about 2,000 season tickets to the Packers' three home games have been purchased. That is a good start, but it will not assure good crowds for all of the games. Although the one-day drive organization was set up because of the emergency, many loyal fans are hoping that it will become a permanent institution. The campaign was conceived and developed by the Green Bay Association of Commerce, with the enthusiastic endorsement of the Green Bay Packers, Inc...146 WORK IN DRIVE: One hundred and forty-six persons have agreed to work in the campaign. Following a breakfast meeting at the Beaumont hotel Thursday morning, where they will receive final instructions, these workers will make a block by block canvass of the

business and industrial sections. No money will be collected by the campaigners Thursday. The ticket purchasers will merely sign a pledge, and the amount of their tickets will be collected later by a representative of the Packer ticket office. The Packers have an excellent home schedule of three games this season. They open NFL competition against their traditional foes, the Chicago Bears, at City stadium Sept. 27. On Oct. 18, they meet the Cleveland Rams, another outfit that has made much trouble for Green Bay fans. The last game at home is Nov. 1 against Jimmy Conzelman's Chicago Cardinals...SAVE \$1.65 To \$2.20: Purchased separately, tickets for these three games would cost all the way to \$9.90. By getting them in advance they will cost from \$3.30 to \$8.25. The saving on the most expensive ticket amounts to \$1.65, while it is \$2.20 for most of the other sections in the stadium. The Packers themselves are vitally interested in the campaign. Friday, Coach Curly Lambeau sent a personal letter to the 146 workers, while today Don Hutson sent this message: "The boys on the Packer squad have



Three of the brightest lights on the Western Army All-Star team, which will tangle with the Green Bay Packers at Marquette stadium in Milwaukee Sunday, Sept. 13, are shown above. Top collegiate performer is Jarrin' John Kimbrough (upper right) who gained All-American recognition at Texas A. and M. The other two are left halfbacks and both played with the New York Giants in the National league. Kay Eakin, Arkansas, is carrying the ball in the upper left shot and Marion Pugh is ready to fire a pass below.

selected me as their spokesman to express to you our appreciation for the time you will spend on the sale of season tickets for our home games."...HUTSON URGES SALE: "A great many of us players now make our homes in Green Bay. Perhaps it won't be many years before our playing days are over, and the only place the Packers will have for us will be on the sale of season tickets each year. So, if you want to make it really tough on us, put this drive over the top so we will have a real figure to shoot at when we are on the other side of the fence."

EAKIN, 'COMEBACK' STAR, PLAYS HERE

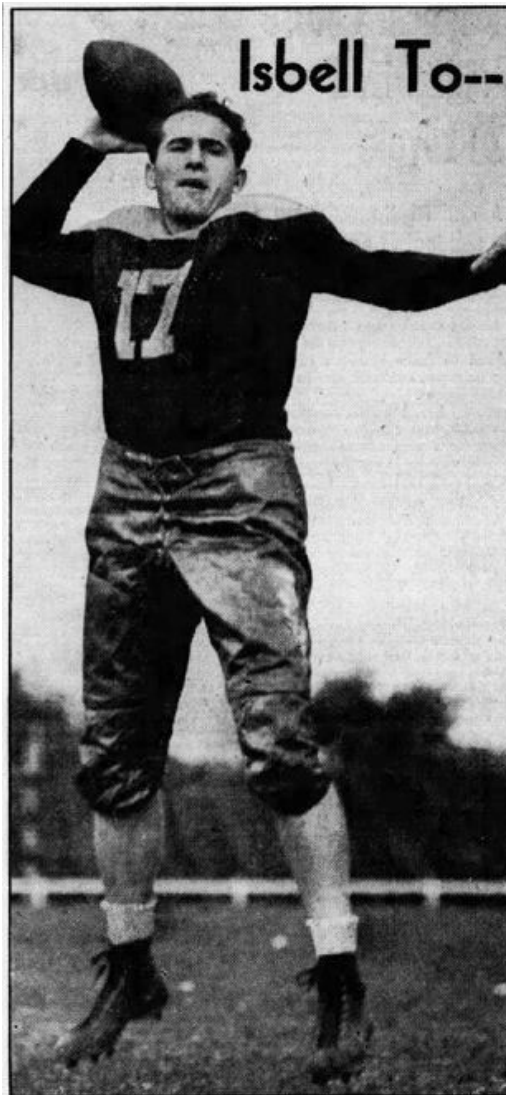
SEPT 5 (Denver) - The man who came back was on the way again here today. Driving hard through a three hour drill, the All-Army football team coached by Major Wallace Wade found revived hope in the person of Kay Eakin, the lean-limbed

185 pound passing star from the razorback country down in Arkansas. Eakin didn't figure too much in last week's game against the Washington Redskins at Los Angeles, but it will be tale on another hue when the soldiers go out to battle the potent Green Bay Packers at Marquette stadium in Milwaukee on Sunday afternoon, September 13, for the benefit of Army Emergency relief. The guy is really winging the ball around. It isn't a new story for hardened pro football followers. They know Eakin makes it a habit of coming through when least expected. For Kay is something more than a brilliant player with a talented kicking toe and a pitching arm with poison in every barbed toss. When Eaking came up to join the New York Giants in 1940 - one of the prize plums canny Steve Owen had plucked off the football draft tree - everybody figured that here was a passing star to replace the aging Ed Danowski. The old Fordham Fusileer's fire had faded, the magic gone from his pitching arm. But here, they said, was a hard hitting youngster who could hit a thin dime with his pitched and run and kick with anybody. A standout on only a mediocre Arkansas team, Eakin looked like the prize of that fall's rookie crop. But then something happened. It seemed as though the towering spires of Manhattan overawed the kid from Arkansas back country. He couldn't do anything right. Every time Coach Owen put him into a game, he pulled some horrible boner. His passes would find their way straight into enemy arms. His kicks were either blocked or would go slithering out of bounds a few meager yards from where he got them away. And every time he carried the ball he wound up under a swarm of tackler before he was even past the line of scrimmage. But that was in 1940. A year ago Eakin came bounding back for another chance. Another gang of brilliant rookies had joined the pro circuit. Eakin was in the background. But then Marion Pugh broke his arm, and Eakin got a reprieve. How he took advantage of it is an old story now. The guy really came back. Watch him against the Green Bay Packers next Sunday afternoon.

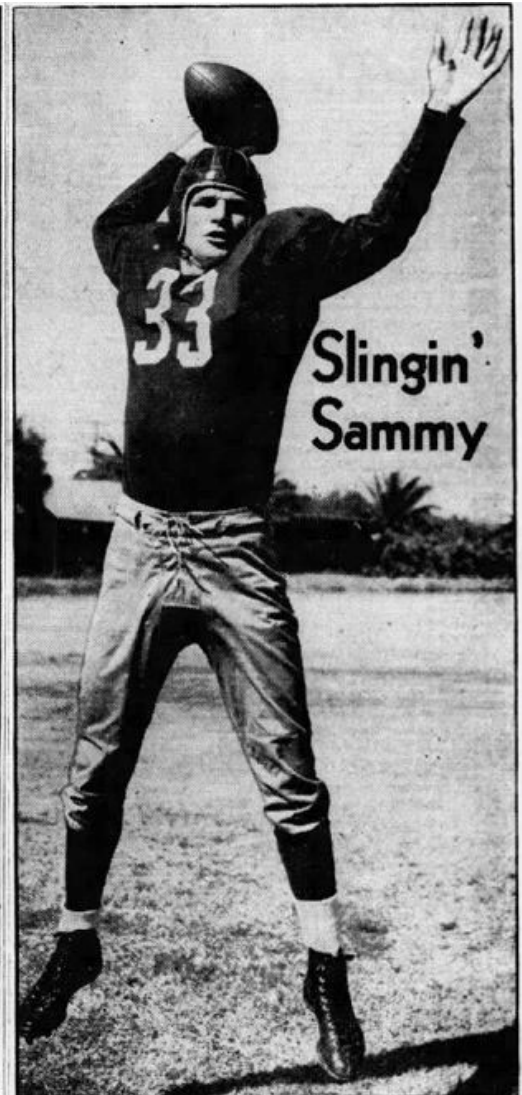
YOUNG GRIDDER JOINS PACKERS

SEPT 5 (Baltimore) - They're signing pro football players younger all the time. Curly Lambeau set a new record in this respect yesterday when he completed negotiations with

Don Younglove, of this city, during the Green Bay practice at Clifton Park in preparation for the game with the Washington Redskins at the Stadium on Monday night. Don has not yet entered the University of Michigan, where his uncle, Stan Fay, was blocking back and captain in 1934, though he did wear a block M on his sweater. Don, in fact, has not finished kindergarten - in fact, he has not yet entered kindergarten. He was 3 years old only last August 13. His father, Wilson Younglove, an engineer here, is a Michigan graduate of the same class as Harry Kipke, during whose reign as head coach Stan Fay was captain. The elder Younglove was a track man at Ann Arbor, but is intent on having Don grow up to be a Michigan football player, say about 1958. Don (that's a good name - Don Hutson, Don Snavely, Don Miller and Ed Don George among others) takes to the training. Already he can placekick the miniature ball, which fits his size, well off the ground, and soon he'll be working toward miniature goal posts. He starts his run like the grown players, and can kick with either foot. Yesterday was a big day for him, for not only did he meet Coach Lambeau, but Bob Ingalls, Michigan center



CECIL ISBELL
He tossed at least one touchdown pass in each '41 tilt

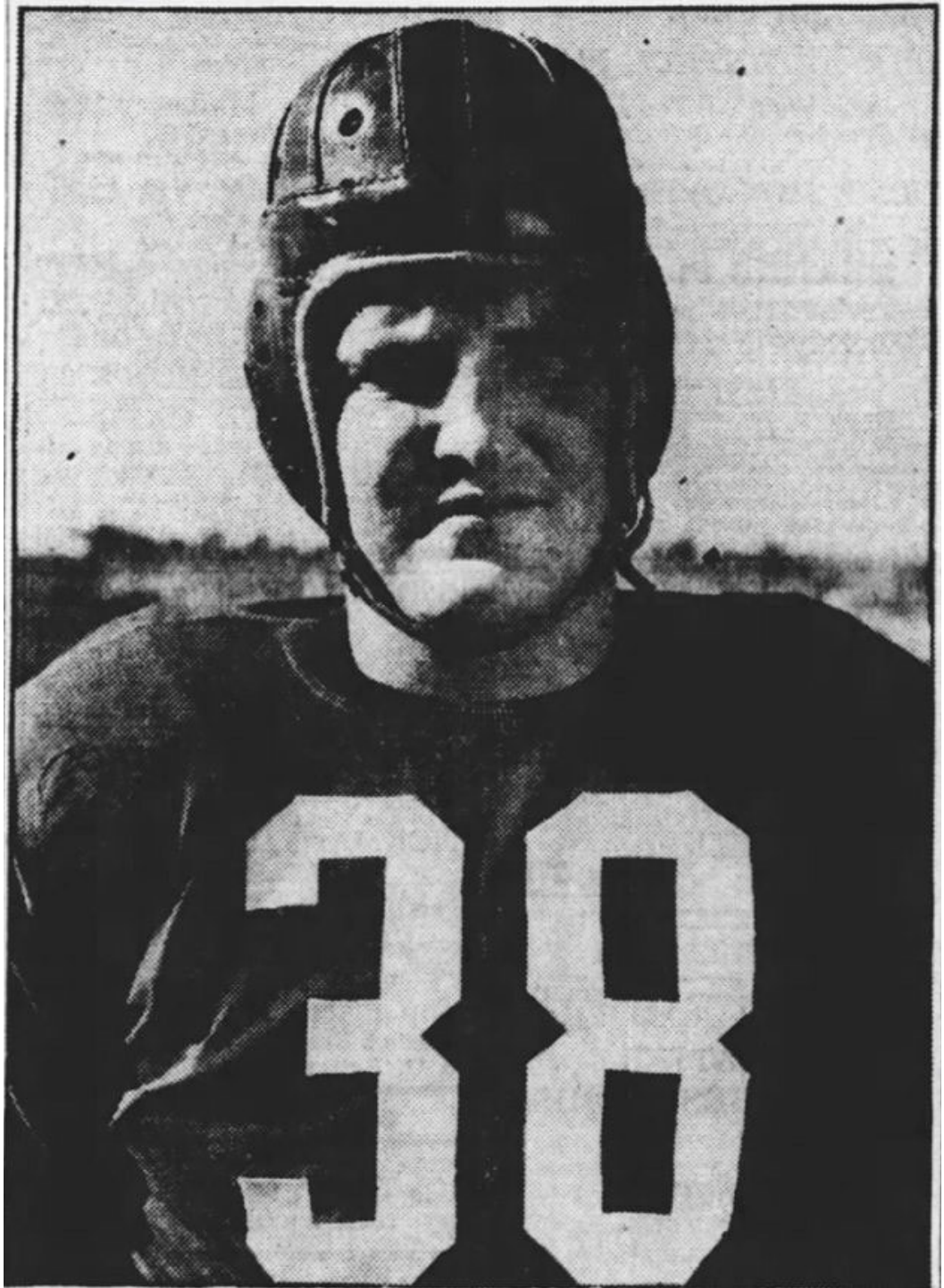


SAMMY BAUGH
Redskins' brilliant passer set for a big assignment

last year, and now a promising Green Bay rookie, held the ball for him to practice his placekicks...The Packers' practice was largely routine, though the squad appeared generally sharper than before. The players went about their short scrimmage and signal drills with more pep, and they seem to be rounding into game condition...Red Smith, the line coach, seems to have more fun out of the practice than anyone. The former Notre Dame griddler, who manages the Green Bay Blue Jays in the Wisconsin State Baseball league, caught a long pass from Cecil Isbell and murmured: "Just like Hutson." Then he tackled Tony Canadeo, who was not looking, and rolled the big back around on the ground...Isbell saw Baby Ray (245 and 6-foot-6) and Bill Lee, the club clown, heading away from practice early and queried - "How do you fat tackles rate leaving so soon?"...R.A. O'Connell, the Redskin advance man, has his own defense for Hutson. "Put him in a pair of Oregon boots, a straitjacket, with handcuffs and boxing gloves, reversed so the padding covers the palms, and I believe we can stop him." Oregon boots, for those not acquainted with O'Connell's home territory of Butte, Mont., are iron footwear with chains to attach to the other leg, used to punish criminals. Hutson qualifies by stealing passes right out of the hands of the defense...Stress laid on perfection of timing amazed some of the several hundred onlookers at the practice yesterday. Gene Ringsdorf, soccer coach here, remarked the rhythm of the pros produced was almost like that of music. But the boys are still more interested in the notes at the box office.

WASHINGTON REDSKINS AND GREEN BAY PACKERS POISED FOR GAME HERE

SEPT 6 (Baltimore) - Football makes its greatest opening of any season in the Stadium when the Washington Redskins and the Green Bay Packers, two of the best teams in the NFL, collide tomorrow night at 8 o'clock before a crowd estimated in advance to be well about 40,000. This preseason game, which will not count in the league standings, will be the only encounter between the Redskins and the Packers this year unless both win in their divisions. Between them they have won four divisional titles in the last five years. In that span, Green Bay finished second only to the Chicago Bears in the years when the Packers did not win, and Washington as second twice to the New York Giants and third last year. Both



REDSKIN CENTER—Burly Ki Aldrich will hold down the center spot for the Washington Redskins against the Green Bay Packers tonight at the Stadium.

teams are ready for action. Green Bay, after beating Brooklyn last Sunday at Ebbets Field, came here on Monday and the squad has been practicing all week at Clifton Park. So many fans have watched the workouts that many will be rooting for the players they have come to know personally to defeat the Eastern representatives...**BEAT ARMY STARS:** Washington, after training on the Pacific Coast, won from the Western Army All-Stars in the Rose Bowl and then headed East, arriving last Thursday. Passing will feature the attacks of both sides. The Redskins have the champion passer, Sammy Baugh, but the Packers have the champion pair, Cecil Isbell and Don Hutson. Both sides should keep the Stadium air filled with long, short and medium aerials for the average fan, and intrigue the closer student of the game by intricate maneuvers in setting up sequences and working to open receivers. Lest it be thought that the pro game will be glorified basketball, attention is called to the linemen, some of the biggest and most powerful athletes who ever have been here in any sport. Big Buford (Baby) Ray, of the Packers, is the heaviest man on his team, 245 pounds being distributed over a 6-foot-6 frame. But Wee Willie Wilkin, the 260-pound Redskin tackle, is even bigger. The guards and centers are all huge gridders. The Wisconsin team is tagged in New York as the Green Bay Monsters...**NOTRE DAME STYLE:** The Packers operate from a Notre Dame style of attack, with the personal trimmings of Coach Curly Lambeau. They use the jump shift, man-for-man blocking from a balanced line and the building for one-play touchdowns which characterized teams coached by Knute Rockne, under whom Lambeau played at South Bend. But they also employ spreads and man-in-motion to make use of the open style of play which is so characteristic of all professional football. Washington favors more the single wing style of offense, and in spite of the presence of Baugh, depends more than a little upon the running feats of Dick Todd, Andy Farkas and Ed Justice for whom the potent arm of Baugh will spread any defense. In addition to football, the game presents a spectacular side that has helped make the pro season so attractive to the fans. The Washington Redskin band will be on hand, and at the outset there will be a spotlight focused upon each player as he is introduced over the public address system.

REDSKINS, PACKERS IN STADIUM BATTLE

SEPT 7 (Baltimore) - Football makes its greatest opening of any season in the Stadium when the Washington Redskins and the Green Bay Packers, two of the best teams in the NFL, collide tomorrow night at 8 o'clock before a crowd estimated in advance to be well above 40,000. This preseason game, which will not count in the league standing, will be the only encounter between the Redskins and the Packers this year unless both win in their divisions. Between them they have won four divisional titles in the last five years. In that span, Green Bay finished second only to the Chicago Bears in the year when the Packers did not win, and Washington was second twice to the New York Giants and third last year. Both teams are ready for action. Green Bay, after beating Brooklyn last Sunday at Ebbets field, came here on Monday and the squad has been practicing all week at Clifton Park. So many fans have watched the workouts that many will be rooting for the players they have come to know personally to defeat the Eastern representatives...**BEAT ARMY STARS:** Washington, after training on the Pacific Coast, won from the Western Army All-Stars in the Rose Bowl and then headed east, arriving last Thursday. Passing will feature the attacks of both sides. The Redskins have the champion passer, Sammy Baugh, but the Packers have the champion pair, Cecil Isbell and Don Hutson. Both sides should keep the Stadium air filled with long, short and medium aerials for the average fan, and intrigue the closer student of the game by intricate maneuvers in setting up sequences and working to open receivers. Lest it be thought that the pro game will be glorified basketball, attention is called to the linemen, some of the biggest and most powerful athletes who ever have been here in any sport. Big Buford (Baby) Ray of the Packers is the heaviest man on his team, 245 pounds being well distributed over a 6-foot-6 frame. But Wee Willie Wilkin, the 260-pound Redskin tackle, is even bigger. The guards and centers are all huge gridders. The Wisconsin team is tagged in New York as the Green Bay Monsters...**NOTRE DAME STYLE:** The Packers operate from a Notre Dame style of attack, with the personal trimmings of Coach Curly Lambeau. They use the jump shift, man-for-man blocking from a balanced line and the building for one-play touchdowns which characterized teams coached by Knute Rockne, under whom Lambeau played at South Bend. But they also employ spreads and man-in-motion to make use of the open style of play which is so characteristic of all professional football. Washington favors more the single wing system of offense, and in spite of the presence of Baugh, depends more than a little upon the running feats of Dick Todd, Andy Farkas, and Ed Justice, for whom the potent arm of Baugh will spread any defense. In addition to football, the game presents a spectacular side that has helped make the pro season so attractive to the fans. The Washington Redskin band will be on hand, and at the outset there will be a spotlight focused upon each player as he is introduced over the public address system.

PRO LEAGUE OFFICIALS TO WATCH REDSKIN-PACKER GRID GAME HERE TONIGHT

SEPT 7 (Baltimore) - When the Washington Redskins and the Green Bay Packers clash in football tonight at the Stadium, something more than a preseason professional game will be offered. For the first time in pro-grad history, a game with unlimited substitutions will be tried. Many league officials, including Elmer Layden, commissioner, will be watching to see if the action if speeded up as proponents of the change claim it will be. The league coaches voted on this measure recently, and a 9-to-1 majority favored its adoption. But rule changes must be unanimous, so it was agreed by Ray Flaherty and Curly Lambeau, the Washington and Green Bay coaches, to put the rule in effect here where the results could be studied by many and its effect observed. They feel that if the result is satisfactory, the recalcitrant coach may be persuaded to change his mind...**ONLY SCHEDULED MEETING:** The teams finished their preparations for their only meeting of the season, unless

they finish first in their divisions and meet for the championship, with short signal drills yesterday. The Redskins remained in Washington, and the Packers worked out at Clifton Park. The announced starting lineups indicate that the two coaches will follow customary procedure. Lambeau will withhold his famous passing combination, Cecil Isbell and Don Hutson, from the starting team. Isbell sits beside him on the bench until the opposing defense is studied a bit and plans for action decided upon. When Isbell and Hutson trot into position, fireworks are likely to begin. Flaherty has Sammy Baugh in action from the start, along with Dick Todd, probably the Skins' best ball carrier. The rule agreement on substitution will mean that the stars can be used more liberally, and rested without losing their services for the remainder of any period, assuring a top speed team upon the field at all times. The colleges adopted this rule last year, from a different reason. The desire there was to avoid placing too much strain upon the younger athletes.

Washington Redskins And Green Bay Packers Poised For Game Here